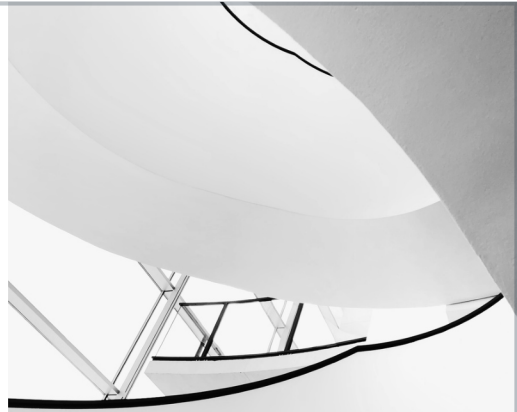




Capitevo Interiors (M)
Sdn. Bhd.



Fe Interior Pte



Company Profile

CORPORATE CULTURE

To foster relationships that enhance our services and deliver outstanding value, we uphold the highest standards of integrity in all our actions. Our team works collaboratively across various boundaries to meet our clients' needs and takes personal accountability for fulfilling our commitments.



Since 2018

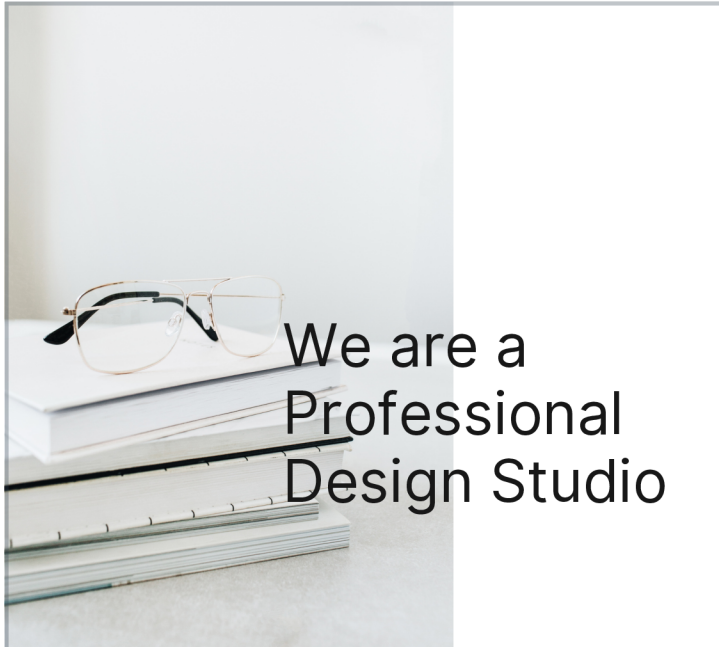


Agenda

Introduction	03
Our Services	07
Direction	08
Reference	10
Deliverables	11
Practical Facts	33
Goals	34



Company Profile/ June 2025



We are a Professional Design Studio

Introduction

Capitevo Interiors Sdn. Bhd. was established in 2018, led by a team of seasoned designers and industry professionals. The director remains hands-on in both design development and project delivery, ensuring consistency and excellence throughout every phase. The firm is known for its reliable methodology, maintaining high standards of design and service across all scales and locations. With award-winning experience across diverse sectors, Capitevo expanded its capabilities in 2025 by founding FE Interior PLT, a specialized subsidiary focused on construction and build works.



Company Profile/ June 2025



About Capitevo

"Innovative Designs, Inspired Spaces"

Introduction Headline

Capitevo is a multidisciplinary design firm focused on redefining space-making. They collaborate with clients to create customized designs that emphasize functionality, aesthetics, and sustainability. Their experienced team blends creativity with technical expertise to deliver timeless and impactful solutions for residential, commercial, and public spaces, ensuring each project reflects the client's unique identity and exceeds expectations.



Company Profile/ June 2025

About Fe Interior



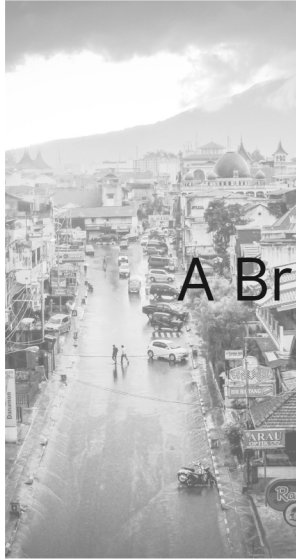
"Built with Precision, Finished with Integrity."

Introduction Headline

FE Interior PLT is a specialized firm offering high-quality construction and interior solutions. Our skilled team has extensive experience in managing end-to-end projects, focusing on workmanship, efficiency, and site coordination. We excel at transforming design concepts into functional spaces that balance aesthetic appeal with practical value.



Company Profile/ June 2025



A Brief History

Capitevo was founded to merge creativity and practicality, aiming to challenge conventional design norms and enhance spatial experiences. Originating from a shared passion of visionary architects and designers, the firm specializes in innovative and sustainable design solutions. It has earned a reputation for meticulous attention to detail, a client-centered approach, and the ability to transform concepts into iconic spaces.

FE Interior PLT was established in 2025 as a construction-focused subsidiary of Capitevo Interiors Sdn. Bhd., a well-regarded interior design firm founded in 2018. Recognizing the growing demand for integrated design-and-build services, the leadership team expanded into construction to offer clients a seamless project delivery experience—from concept to completion.

With roots in award-winning interior design, FE Interior PLT was formed to bridge the gap between design vision and on-site execution. The team comprises experienced site managers, builders, and technical specialists who work closely with designers to ensure quality, efficiency, and precision in every project.

Since its inception, FE Interior PLT has built a reputation for delivering high-standard interior fit-outs, renovations, and turnkey solutions across commercial, retail, residential, and hospitality sectors.

Company Profile

June 2025



Our Presence

Vision

Keep thing on track

Our vision is simple: keep things on track and build with purpose. We turn great ideas into well-crafted spaces—on time, on budget, and always with a touch of style.

The Future of The Brand

FE Interior PLT is innovating in the design-and-build industry by merging creativity with construction. The company emphasizes sustainable practices, smart technologies, and expansion into diverse sectors and regions, aiming to improve building efficiency while ensuring quality, reliability, and client satisfaction.





Our Services



Expertise

Interior Design

We whip up and roll out jaw-dropping interior design ideas just for you, making sure that both you and your guests get to soak in the fabulous vibes of your home!

Consultancy

Capitevo Design PLT offers extensive consultancy services in architectural and interior design, focusing on project analysis, budget alignment, and informed decision-making.



Company Profile/ June 2025



Our Services



Expertise

Construction

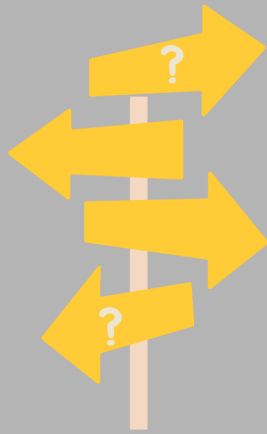
We don't just design—we build it right. At FE Interior PLT, we specialize in interior construction, fit-outs, renovations, and turnkey solutions. From walls to wiring, flooring to finishing, we bring creative ideas to life with solid workmanship and sharp project management. Think of us as your design-to-delivery dream team—built to keep things smooth, stylish, and on schedule.

Consultancy

Need expert advice before you build? We've got your back. At FE Interior PLT, our consultancy services help you plan smart, spend wisely, and avoid costly surprises. From space planning to material selection, we turn ideas into actionable strategies—so your project starts right and stays on track.



Company Profile/ June 2025



Creative Direction

Capitevo + FE Interior, creative direction goes beyond mood boards—we bring ideas to life on site. From layout planning to material execution, we ensure every design detail is buildable, practical, and aligned with the big vision. It's where creativity meets construction—turning sketches into solid, stunning spaces.

The Future

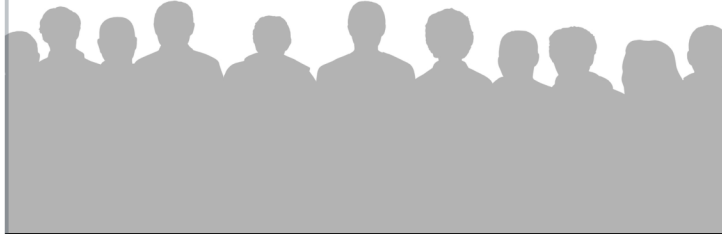
Embracing Technology

Capitevo + FE Interior, we're not just building walls— we're building smarter. From 3D visualization to project tracking apps and precision tools on site, we embrace cutting-edge tech to boost efficiency, accuracy, and creativity. The result? Faster builds, fewer mistakes, and flawless finishes.



Company Profile/ June 2025

Know your — Target Audience



Know Our People

We design and build for the go-getters, the game-changers, and the dream-space makers. Whether you're a business owner, property developer, retail brand, or home upgrader—you've got the vision, and we've got the tools to build it. We speak your language: style, speed, and solid results.



Company Profile/ June 2025



Our --- References

Sk Magic

Capitevo completed the SK Magic retail outlet project in 14 days, showcasing their expertise, careful planning, and commitment to exceptional results under tight deadlines.



Outpozit

Capitevo completed the Outpozit Genting outlet, a 40,000 sqft retail space, in 60 days, showcasing the team's efficiency, creativity, and commitment to excellence.



Dyson

Our founder partnered with Dyson to establish over 80 SIS and kiosk outlets in one year, showcasing our commitment to efficiency, precision, and excellence in retail design.





Deliverables

Retail Outlets 100+

Corporate Offices 08

Surau & Mosques 04

National Musuem 12

Residences 14

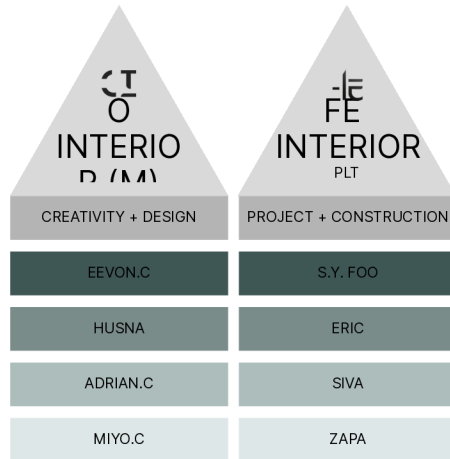
Consultancy 09



Company Profile/ June 2025

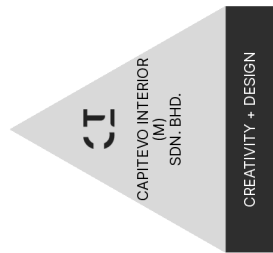


Our Company Chart _____



Company Profile/ June 2025

Our Company Info



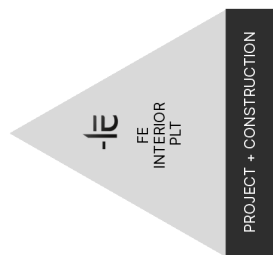
F-2-13A, PLAZA ARKADIA, NO.3,
JALAN INTISARI PERDANA, DESA
PARKCITY, 52200 K.L

ESTABLISH 2020

202001027242 (1383562-M)

MAYBANK 5648 7452 9884

CIDB G1



F-3-5, PLAZA ARKADIA, NO.3, JALAN
INTISARI PERDANA, DESA PARKCITY,
52200 K.L

ESTABLISH 2025

202504001549 (LLP 0043050-LGN)

MAYBANK 5648 7461 3893

CIDB G4



Company Profile/ June 2025

01 | COMMERCIAL | FIT OUT

PROJECT NAME

SK MAGIC

PROJECT LOCATION

QUEEN BAY MALL, PENANG

PROJECT DATE

23.07.2019

PROJECT DESCRIPTION

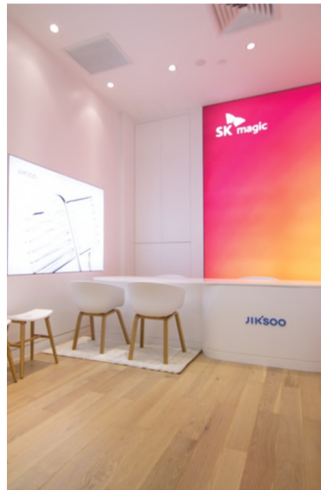
We successfully capture and built SK Magic's retail space at Queensbay Mall, Penang, marking the first direct-fit out contract awarded to a local Malaysian contractor by SK Magic Korea.

The project required a complete turnkey solution, completed within a tight 14-day schedule while adhering to SK Magic's global brand guidelines.

This achievement highlights our team's capability to deliver high-quality retail environments under pressure, ensuring professionalism and seamless communication.

CONTRACT VALUE

RM 308,000



02 | COMMERCIAL | CONSULTANCY & BUILD

PROJECT NAME

OUTPOZT

PROJECT LOCATION

SKY AVENUE, GENTING

PROJECT DATE

21.11.2019

PROJECT DESCRIPTION

As the appointed consultancy and main contractor, we successfully delivered the Outpoztt multi-brand lifestyle hub at SkyAvenue, Genting Highlands — one of the most challenging yet rewarding projects to date, given its tight 2-month delivery timeframe from conceptual design to full completion.

Situated on a prominent floor within the mall, Outpoztt is a 40,000 sqft curated retail experience that integrates fashion, lifestyle, and F&B into a single immersive destination. The design brief called for a cohesive yet distinct identity for each of the five main brands while ensuring fluid transitions between spaces and a consistent overarching experience.

CONTRACT VALUE

RM 2,100,000



03

OFFICE

DESIGN & BUILD

PROJECT NAME

MSIG

PROJECT LOCATION

JOHOR

PROJECT DATE

01.08.2020

PROJECT DESCRIPTION

MSIG Johor Corporate Office marks a strategic regional expansion of the globally recognized insurance provider, embodying the group's commitment to innovation, client service, and employee well-being. The 11,000 sqft workspace is designed to reflect MSIG's core brand values: trust, clarity, and performance through a modern, human-centered office environment.

Our design approach centered on corporate agility and spatial transparency, balancing professional functionality with contemporary aesthetics. The layout was reimagined to support hybrid work models, with a focus on open collaboration, breakout areas, and wellness.

CONTRACT VALUE

RM 900,000



04

OFFICE

DESIGN & BUILD

PROJECT NAME

ROCKWOOL OFFICE

PROJECT LOCATION

WISMA COSPLANT K.L

PROJECT DATE

09.02.2022

PROJECT DESCRIPTION

Sustainable corporate office that combines functionality with eco-friendly design principles. The Rockwool Office, located in Wisma Cosplant K.L, stands as a testament to modern workspace innovation, emphasizing energy efficiency and the use of sustainable materials.

The interior design incorporates natural lighting and ventilation to reduce energy consumption, while the choice of materials ensures minimal environmental impact.

Each element, from the open-plan layout to the ergonomic furniture, is carefully selected to enhance productivity and well-being, creating an inspiring environment for its occupants.

CONTRACT VALUE

RM 680,000



05

MUSIEM

DESIGN & BUILD

PROJECT NAME

PAMERAN JALAN MERDEKA

PROJECT LOCATION

CARCOSA SERI NEGARA

PROJECT DATE

09.02.2018

PROJECT DESCRIPTION

Carcosa Seri Negara (CSN) is a 40-acre historical site in Malaysia, featuring the two significant buildings: Carcosa, built in 1895 by Sir Frank Swettenham as a residence, and Seri Negara, established in 1913 as a guest house for VVIPs. Carcosa was the first building in the country with electricity and telephone service. Seri Negara served as the official guest palace for the first Agong and hosted the drafting of the Malayan Constitution and the signing of the Merdeka Agreement in 1957. After years of neglect, AHM took over in 2017 to restore the buildings, with plans to establish Carcosa as a peace museum and Seri Negara as an arts and nature center, including a restaurant opening in March 2018.

CONTRACT VALUE

RM 300,000



06

MUSUEM

DESIGN & BUILD

PROJECT NAME

PAMERAN SAYANGI MALAYSIAKU

PROJECT LOCATION

GALLERY 2
MUZIUM NEGARA

PROJECT DATE

04.12.2018

PROJECT DESCRIPTION

The Pameran Sayangi Malaysiaku, held during Malaysia's 61st Merdeka celebration, was an interactive exhibition designed to reconnect younger Malaysians with the nation's history and cultural values.

Emphasizing a "Touch, Feel & Play" philosophy, it transformed traditional narratives into engaging experiences using multi-sensory elements like lighting, materials, and audio. This inclusive approach invited families and first-time visitors to actively participate in the nation's story rather than just observe.

CONTRACT VALUE
RM 300,000



07

MUSUEM

DESIGN & BUILD

PROJECT NAME

PAMERAN WAYANG KULIT

PROJECT LOCATION

GALERY 3
MUZIUM NEGARA

PROJECT DATE

04.12.2018

PROJECT DESCRIPTION

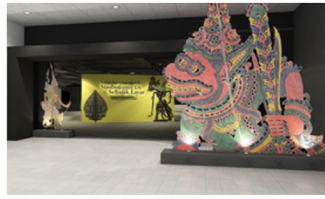
We were entrusted with the interior design of the "Pameran Wayang Kulit Nusantara: Simbolisme Disebalik Layar" (Malay Archipelago Shadow Puppets: Symbolism Behind The Screen Exhibition) located in the National Museum of Malaysia.

- To enhance interactivity, we incorporated multimedia technology, allowing visitors to touch and feel the exhibits.
- The vibrant rainbow color scheme, complemented by specialized lighting, perfectly harmonizes with the puppets.

The total built-up area for the exhibition is 7,000 sq. ft.

CONTRACT VALUE

RM 250,000



PROJECT NAME

THE LOST KINGDOM

PROJECT LOCATION

GALLERY 2
MUZIUM NEGARA

PROJECT DATE

04.12.2019

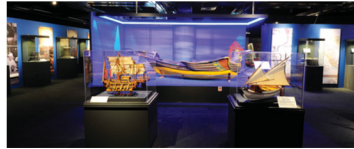
PROJECT DESCRIPTION

The Lost Kingdoms Exhibition at Muzium Negara, Kuala Lumpur.

The exhibition titled "The Lost Kingdoms" at Muzium Negara showcases kingdoms that have vanished from existence.

In partnership with the National Museum of Indonesia, Cambodia, Thailand and the Department of Museums Malaysia, the exhibition presents 103 artefacts from total of 12 lost kingdoms.

CONTRACT VALUE
RM 350,000



09

RESIDENTIAL | DESIGN & BUILD

PROJECT NAME

MR. GOH CONDOMINIUM

PROJECT LOCATION

BUKIT SEGAMBUT

PROJECT DATE

04.02.2018

PROJECT DESCRIPTION

Mr. Goh's condominium features a modern design that emphasizes simplicity and functionality, with an oriental-themed master bedroom blending contemporary elements. The open-plan living room acts as a central gathering space, filled with natural light and soft, neutral tones for a serene atmosphere. The stylish kitchen boasts sleek cabinetry and high-end appliances, accompanied by a cozy dining nook. The master bedroom highlights elegant silk fabrics and intricate woodwork, while the en-suite bathroom offers spa-like features for relaxation. Overall, the design harmonizes aesthetic appeal with practical living spaces for comfort and style.

CONTRACT VALUE

RM 250,000



10 | RESIDENTIAL | DESIGN & BUILD

PROJECT NAME

ALEX'S RESIDENCE

PROJECT LOCATION

KOTA KEMUNING

PROJECT DATE

23.05.2018

PROJECT DESCRIPTION

The structure features a touch of 'brutalism' with raw concrete finishes. The calm dining space is part of an open-plan layout that connects the kitchen, dining, and living areas, promoting interaction. Floor-to-ceiling windows allow natural light and views of greenery, enhancing the minimalist design. The clean-lined furniture and subtle wood accents provide warmth, making it functional for intimate gatherings and larger events, reflecting a modern lifestyle.

CONTRACT VALUE
RM 1,200,000



PROJECT NAME

DATO SRI HOW KOK CHOONG

PROJECT LOCATION

SAUJANA IMPIAN, KAJANG

PROJECT DATE

06.06.2018

PROJECT DESCRIPTION

This stunning 2½ storey bungalow features 7,000 square feet of modern classic design, completed in two months. Its elegant exterior includes sleek lines and large windows that invite natural light. Inside, a grand foyer leads to an open-plan living, dining, and kitchen area, enhanced by high-quality finishes like marble and hardwood. The master suite serves as a luxurious retreat, with a walk-in closet and en-suite bathroom. Additional bedrooms offer comfort and privacy with en-suite facilities. The outdoor space boasts a landscaped garden and swimming pool, making this bungalow a statement of comfort and style.

CONTRACT VALUE

RM 1,200,000



PROJECT NAME

MR. & MRS LEE RESIDENCE

PROJECT LOCATION

AMPANG

PROJECT DATE

12.05.2018

PROJECT DESCRIPTION

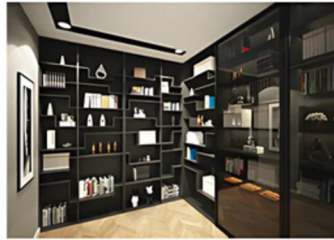
Modernism, it is designed for a client based on their personality and the color they love. Simple yet functional modern design.

The mostly neutral residence is brought to life through design elements, building materials and furnishings which are equally as tactile as they are visually stimulating.

Rich grained woods, patterned natural stone and sleek metal combine with dramatic textured textiles to create a dynamic living space.

CONTRACT VALUE

RM 800,000



13 | RESIDENTIAL | DESIGN & BUILD

PROJECT NAME

THE CREEK

PROJECT LOCATION

BUKIT TIMAH

PROJECT DATE

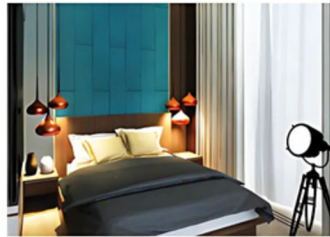
04.08.2019

PROJECT DESCRIPTION

Bringing sea into interior space in order to enrich vibrancy of the space. Wood elements blends well with grey backdrop. Creating a bit of warmth ambiance.

The use of sustainable materials and eco-friendly design principles not only respects the environment but also elevates the overall aesthetic, creating a space that is both beautiful and mindful.

CONTRACT VALUE
RM 600,000



14 | RESIDENTIAL | DESIGN & BUILD

PROJECT NAME

MR.ONG'S RESIDENCES

PROJECT LOCATION

MERANTI HOUSE. KL

PROJECT DATE

02.10.2019

PROJECT DESCRIPTION

The aesthetic of this home embodies minimalism, yet with a more sophisticated and elegant touch. The shapes are uncomplicated and distinct, with every inch designed to be both functional and visually appealing.

We offer the finest materials that are not only easy to maintain but also surprisingly beautiful every time. The spaces are distinctly defined, enhancing the overall design.

CONTRACT VALUE
RM 1,600,000



15 | COMMERCIAL | DESIGN & BUILD

PROJECT NAME

HEALTHLAND FAMILY WELLNESS

PROJECT LOCATION

AMPANG POINT

PROJECT DATE

06.04.2023

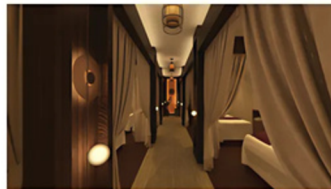
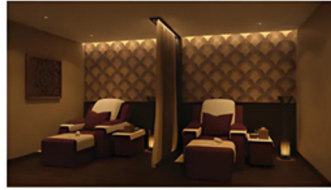
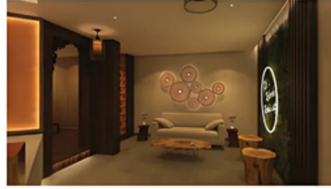
PROJECT DESCRIPTION

A Vision for a Balinese-Inspired Family Wellness Center

Imagine a family wellness center designed with a Balinese theme, emphasizing intimacy and warmth throughout its layout.

The entire facility is thoughtfully crafted to create private retreats within its Balinese-inspired design. From the reception area to the treatment rooms and communal spaces, the ambiance is enhanced by soft, golden-toned lighting.

CONTRACT VALUE
RM 600,000



16 | COMMERCIAL | DESIGN & BUILD

PROJECT NAME

HEALTHLAND FAMILY WELLNESS

PROJECT LOCATION

USJ TAIPAN, SUBANG

PROJECT DATE

06.04.2023

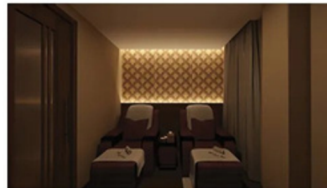
PROJECT DESCRIPTION

Envision a Balinese themed family wellness center that prioritized a sense of intimacy and warmth through it's design.

The entire space is curated to offer pockets of privacy within its Balinese- inspired layout. Each area, from the reception to treatment rooms and communal spaces, is infused with gentle, golden-toned lighting.

These soft lights are carefully positioned to evoke a feeling of comfort and coziness, allowing families to find intimate moments of relaxation together.

CONTRACT VALUE
RM 600,000



PROJECT NAME

PAMERAN MALAYSIA TANAH AIRKU

PROJECT LOCATION

JABATAN MUZIUM MALAYSIA

PROJECT DATE

31.08.2023

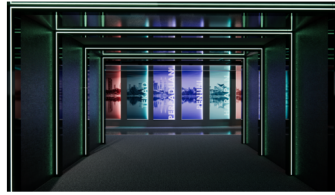
PROJECT DESCRIPTION

The design concept of Malaysia Tanah Airku exhibition emphasizes a timeline tunnel that embrace vibrancy and cultural richness. It's a journey through time immersed in vivid colors and lively multimedia presentations that celebrate Malaysia's diverse heritage and history.

The design incorporate interactive exhibits, vibrant visuals and immersive storytelling to engage visitor and evoke a sense of pride and connection to the nation's past, present and future.

CONTRACT VALUE

RM 300,000



18 | EXHIBITION

DESIGN & BUILD

PROJECT NAME

PAMERAN SUSUR MASA

PROJECT LOCATION

JABATAN MUZIUM MALAYSIA

PROJECT DATE

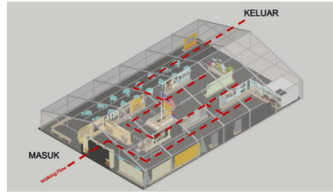
15.07.2023

PROJECT DESCRIPTION

Pameran Susur Masa is an immersive, travelling edutainment exhibition designed to bring Malaysia's multicultural heritage and journey of unity to life. Held as a centerpiece during Minggu Perpaduan, the exhibition's goal is to foster intergenerational understanding, promote cultural pride, and strengthen national identity through interactive storytelling.

The layout is designed as a walkthrough timeline, merging museum-style curation with family-friendly interactivity. Zones are modular and mobile, enabling the exhibition to travel nationwide. Each chapter ends with a "reflection corner" for visitors to engage in small group dialogue or leave a note.

CONTRACT VALUE
RM 150,000



19

SURAU

DESIGN & BUILD

PROJECT NAME

SURAU AL- AMIN

PROJECT LOCATION

TAMAN BALAKONG JAYA

PROJECT DATE

09.12.2024
30.01.2025 COMPLETED

PROJECT DESCRIPTION

Surau Al-Amin in Balakong is a modern community prayer space embodying elegance and warmth. Key features include:

- A clean, minimalist exterior and serene, air-conditioned interior
- Spacious main prayer hall for daily and congregational prayers
- Separate ablution areas and accessible entry for all
- Natural light-enhancing windows and ceiling fans for comfort
- Versatile layout for religious classes or small events

The calming neutral palette and geometric motifs create a tranquil environment for worship and reflection.

CONTRACT VALUE
RM 350,000



20

SURAU

DESIGN & BUILD

PROJECT NAME

SURAU AL- IMAN

PROJECT LOCATION

TAMAN BALAKONG JAYA

PROJECT DATE

05.03.2025
29.03.2025 COMPLETED

PROJECT DESCRIPTION

Surau Al Iman is designed as a serene and functional prayer facility that reflects a balance of spirituality, simplicity, and community engagement. This surau aims to serve as both a daily place of worship and a spiritual hub for its surrounding neighbourhood.

Surau Al Iman is a modest yet meaningful religious structure designed to foster unity, reflection, and spiritual growth in a welcoming environment.

CONTRACT VALUE
RM 400,000



PROJECT NAME

MASJID GONG CHAPA

PROJECT LOCATION

GONG CHAPA, KELANTAN

PROJECT DATE

20.02.2025 ONGOING
30.10.2025 TARGET COMPLETION

PROJECT DESCRIPTION

Masjid Gong Chapa in Kelantan is a modern mosque design that combines contemporary architecture with traditional Islamic elements. Key features include:

- A striking facade with geometric screening for ventilation and privacy
- A prominent minaret and an elevated entrance plaza
- A spacious main prayer hall with natural light
- Timber-accented high ceilings and a sculptural mihrab wall
- Wide glass doors promoting outdoor connectivity

The design emphasizes environmental harmony, spiritual serenity, and functionality, establishing it as a forward-thinking house of worship reflecting local identity.

CONTRACT VALUE
RM 4,000,000



PROJECT NAME

MASJID GONG CHAPA

PROJECT LOCATION

GONG CHAPA, KELANTAN

PROJECT DATE

20.02.2025 ONGOING
30.10.2025 TARGET COMPLETION

PROJECT DESCRIPTION

The construction of Masjid Gong Chapa in Kampung Gong Chapa, Kelantan, is progressing steadily, currently in the foundation and substructure phase. Key activities include:

- Ground excavation and earthworks
- Concrete footing and pad construction
- Steel reinforcement installation
- Early-stage formwork and column base preparation

The project adheres to structural integrity, safety, and Shariah-compliant planning.

This development is a significant spiritual and architectural investment, symbolizing faith and progress for the community.



22

HOSTEL

CONSULTANCY, DESIGN & BUILD

PROJECT NAME

MAAHAD MUHAMMADI
PEREMPUAN HOSTEL

PROJECT LOCATION

BANDAR KOTA BHARU,
KELANTAN

PROJECT DATE

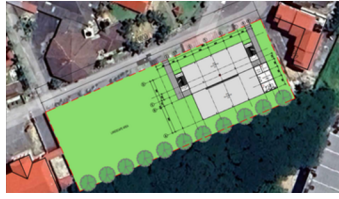
10.06.2025 ONGOING
30.04.2026 TARGET COMPLETION

PROJECT DESCRIPTION

Currently demolishing works it's in progress, expected to completed demolishing next week.

Following that, the construction team will begin the foundation work, which is scheduled to start immediately after. This phase involves laying the groundwork for the new structures, ensuring a solid base for the hostel's design. The project aims to create a modern and comfortable living space for the students, incorporating sustainable and environmentally friendly materials. With a focus on community and learning, the hostel will feature communal areas, study rooms, and recreational facilities to support a balanced and nurturing environment for all its residents.

CONTRACT VALUE
RM 5,000,000



PROJECT NAME

SURAU AL- ANNUR

PROJECT LOCATION

TAMAN SERI TANJUNG,
SEMENYIH

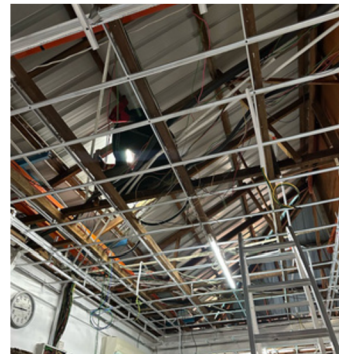
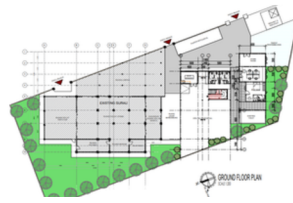
PROJECT DATE

10.07.2025 ONGOING
30.11.2025 TARGET COMPLETION

PROJECT DESCRIPTION

In the middle of design stage, the Surau Al-Annur project focuses on creating a harmonious space that integrates traditional Islamic elements with modern architectural design. The consultants are collaborating closely with local communities to ensure that the surau not only meets functional needs but also serves as a welcoming and spiritual gathering place. Sustainable materials and energy-efficient solutions are prioritized to minimize environmental impact while maintaining aesthetic appeal. As the project progresses, attention to detail and cultural sensitivity guide every decision, ensuring that the final structure is both beautiful and meaningful to its users.

CONTRACT VALUE
RM 1,500,000





2025 Trends Collections

Minimalist With a Cozy Twist

Textured Walls & Ceilings



Wellness Spaces



Discreet Tech



Company Profile/ June 2025

Testimonial



"You always nail it!
From design to
costing and timeline,
you consistently
deliver on point and
on time. Truly
impressive!"

Happy Client



Company Profile/ June 2025

Timeline



2018

Establishment and Foundation
Formation of the core team and setup of operational infrastructure.
Secured first project: a high-end residential interior design.

2020

Building Reputation and Portfolio Expansion
Completed significant projects in retail, corporate offices, and residential spaces.
Partnered with developers and international design firms to work on prestigious retail and gallery spaces.

2022

Strategic Growth
Expanded operations to handle larger-scale projects, including multi-outlet retail designs.
Delivered high-profile projects such as museum and restaurant interiors, earning accolades for design excellence.

2024

Scaling Up and Diversification
Designed and executed over 80 retail outlets in one year, including collaborations with global brands like Dyson, Samsung, SK Magic.
Invested in advanced technologies like VR and BIM to enhance client presentations and streamline project workflows.



Company Profile/ June 2025

Practical Facts

6 Years

Capitevo has been in business for over 06 years, providing high-quality products and services to our customers.

10 Employees

Capitevo + Fe has a team of 10 employees who are dedicated to providing exceptional customer service and innovative solutions.

200 Clients

The founder has extensive experience working with developers, suppliers, and global design firms in various sectors, including retail, corporate, residential, museums, galleries, and restaurants.



Company Profile/ June 2025



Goals

Goal 01 Expand Market Presence
Locally and Internationally.

Goal 02 Lead in Sustainable and
Human-Centric Design

Goal 03 Invest in Technology and
Talent Development

Company Profile/ June 2025



Capitevo + Fe Interior

Phone

+6012-8383 605
+6012-3220 643

Website

www.feinterior.com
www.capitevo.com

Email

ev@feinterior.com
syfoo@feinterior.com
en@capitevo.com.my
syfoo@capitevo.com.my

Address

F.2.13a. + F-3-5 Plaza Arkadia.
3. Jalan Intisari Perdana.
Desa Parkcity
52200 Kuala Lumpur. Malaysia
Company Profile/ June 2025





LIMITED LIABILITY PARTNERSHIPS ACT 2012
(ACT 743)

**CERTIFICATE OF REGISTRATION OF
LIMITED LIABILITY PARTNERSHIP**

This is to certify that

**FE INTERIOR PLT
202504001549 (LLP0043050-LGN)**

was registered under the Limited Liability Partnerships Act 2012 on the
5th day of June 2025.

Dated at **KUALA LUMPUR** this 5th day of June 2025.

DATUK NOR AZIMAH ABDUL AZIZ
REGISTRAR OF LIMITED LIABILITY PARTNERSHIPS
MALAYSIA

USER ID : 000202411150014 OrdeNo : 0220250405000318 (030882)
THIS LIMITED LIABILITY PARTNERSHIP INFORMATION IS GENERATED / PRINTED AS AT 05-06-2025 00:51:48 PM
NOORAH SMI@CENTRAL, NO. 7 JALAN STRECH BERTRAG 5, KUALA LUMPUR CENTRAL, 50463 KUALA LUMPUR.
Tels: 03-7721 4000 Fax: 03-7721 4001



PERAKUAN PENDAFTARAN

Adalah dengan ini diperakui bahawa kontraktor yang dinyatakan di bawah ini telah berdaftar dengan Lembaga mengikut Bahagian VI Akta Lembaga Pembangunan Industri Pembinaan Malaysia 1994. Pendaftaran ini adalah tertakluk kepada syarat-syarat yang telah ditetapkan bersama perakuan ini.

No. Pendaftaran : 0120250715-WP157919
Nama Kontraktor : FE INTERIOR PLT
Alamat Berdaftar : F-3-5 PLAZA ARKADIA
NO.3 JALAN INTISARI PERDANA
DESA PARKCITY
Daerah : KUALA LUMPUR
Tarikh Mula Berdaftar : 16/07/2025

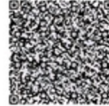
GRED	KATEGORI	PENGGHUSUSAN
G4	B	B04
G4	CE	CE21
G4	ME	M15

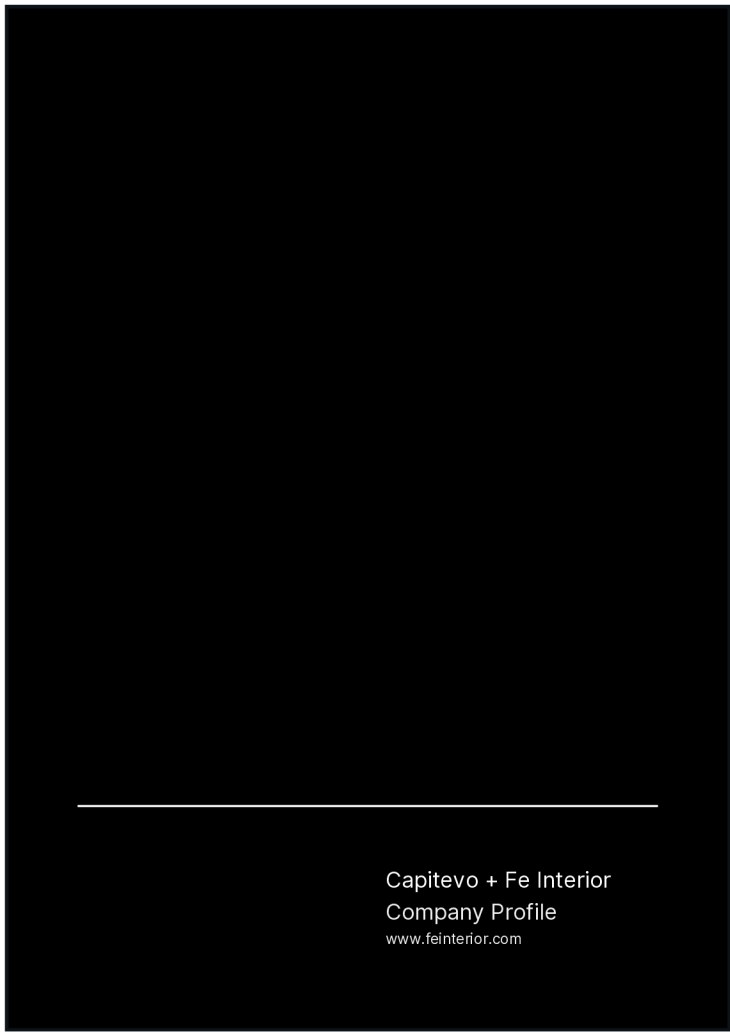
Tarikh Mula Berkuatkuasa : 16/07/2025

Tarikh Habis Tempoh Perakuan : 15/07/2027

STATUS: BARU

Ketua Eksekutif
Lembaga Pembangunan Industri Pembinaan Malaysia
Tarikh: 16/07/2025





Capitevo + Fe Interior
Company Profile
www.feinterior.com